

## **HOLYHEAD – LOCAL NOTICE TO MARINERS 05/2025**

### **Preliminary Notice - Asmund Wreck – Navigation Marks**

Issued 1<sup>st</sup> January, 2025  
Expires On UKHO issuing chart correction

The port hand buoy (Occasional, unlit) to the west of the wreck of the SS Asmund (53° 19'.3N 004° 35'.4W) in the Outer Harbour is to be permanently discontinued.

Two new buoys are to be established:

'AW' West Cardinal Mark  
53° 19'.295 N 004° 35'.480 W  
YBY  
West cardinal top mark,  
VQ(9). Nominal range 2 Miles

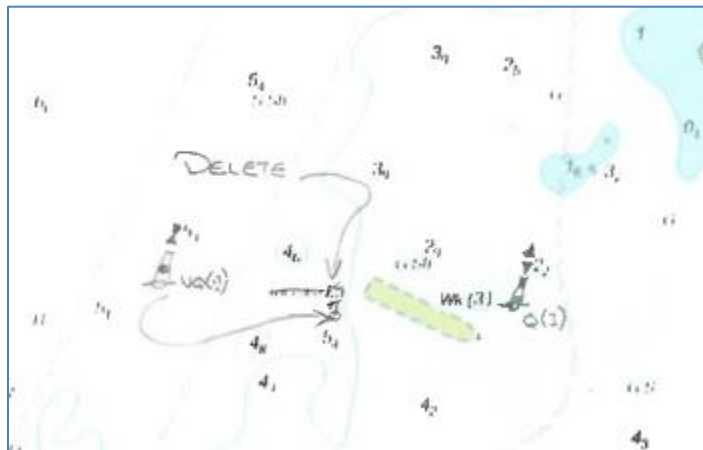
'AE' East cardinal Mark  
53° 19'.295 N 004° 35'.350 W  
BYB  
East cardinal top mark,  
Q(3). Nominal range 2 Miles

It is intended to make the changes early 2025.

The improvement to the buoyage is being made with the consent of the Corporation of Trinity House under section 199(2) of the Merchant Shipping Act, 1995.

Trinity House and the UKHO will be informed once the change has been made and a chart correction will be issued in due course.

Harbour Master  
Holyhead Harbour



Artists impression of chart correction  
– NOT to be used for navigation

SS Asmund  
c.1931



The only part of the structure visible  
now is a 'shark fin' at very low tides.